

# Design of Renovations & Improvements at Page Park

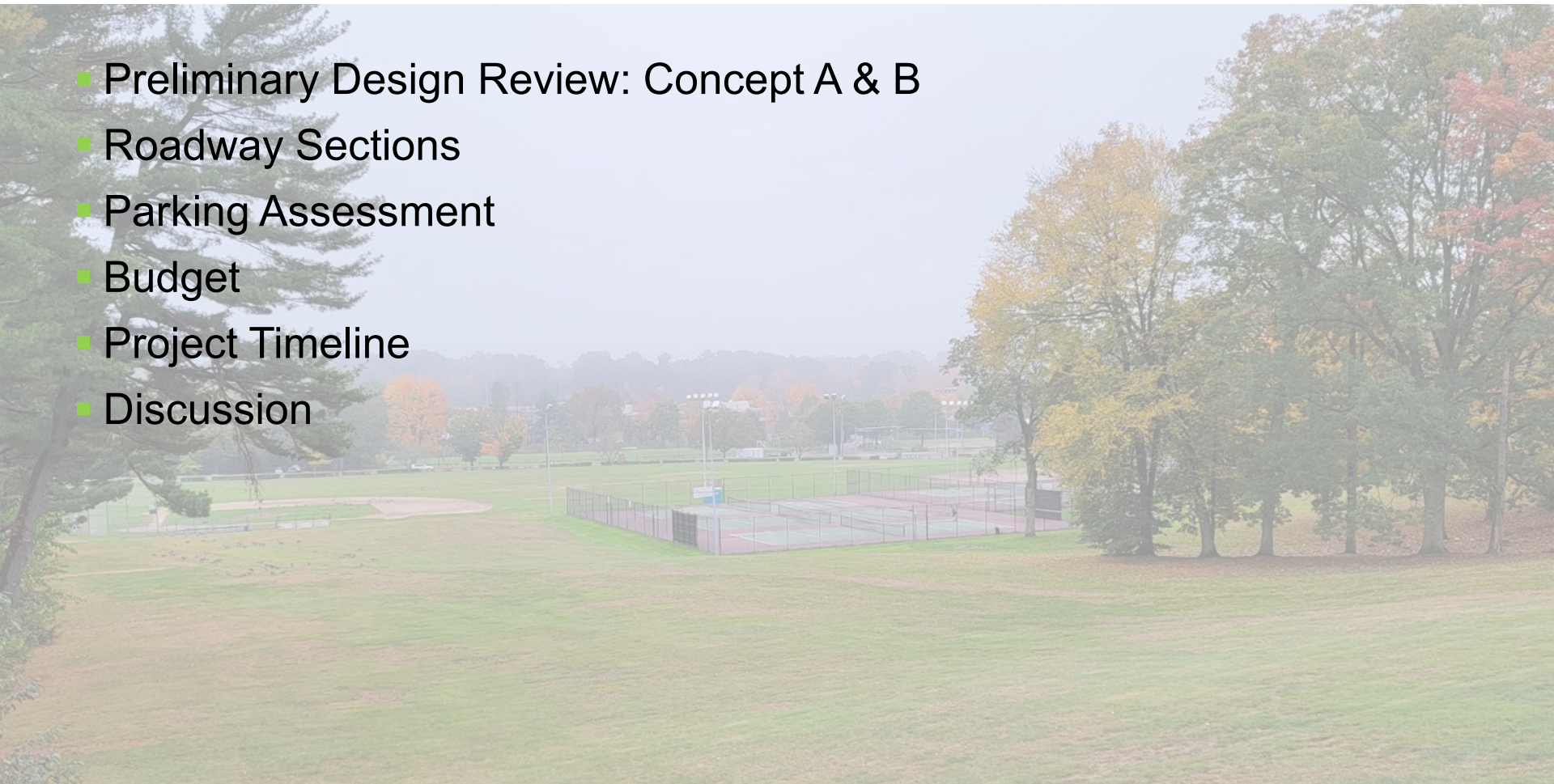


Board of Park Commissioners | February 16, 2022



# PAGE PARK Agenda

- Preliminary Design Review: Concept A & B
- Roadway Sections
- Parking Assessment
- Budget
- Project Timeline
- Discussion





# PAGE PARK Master Plan



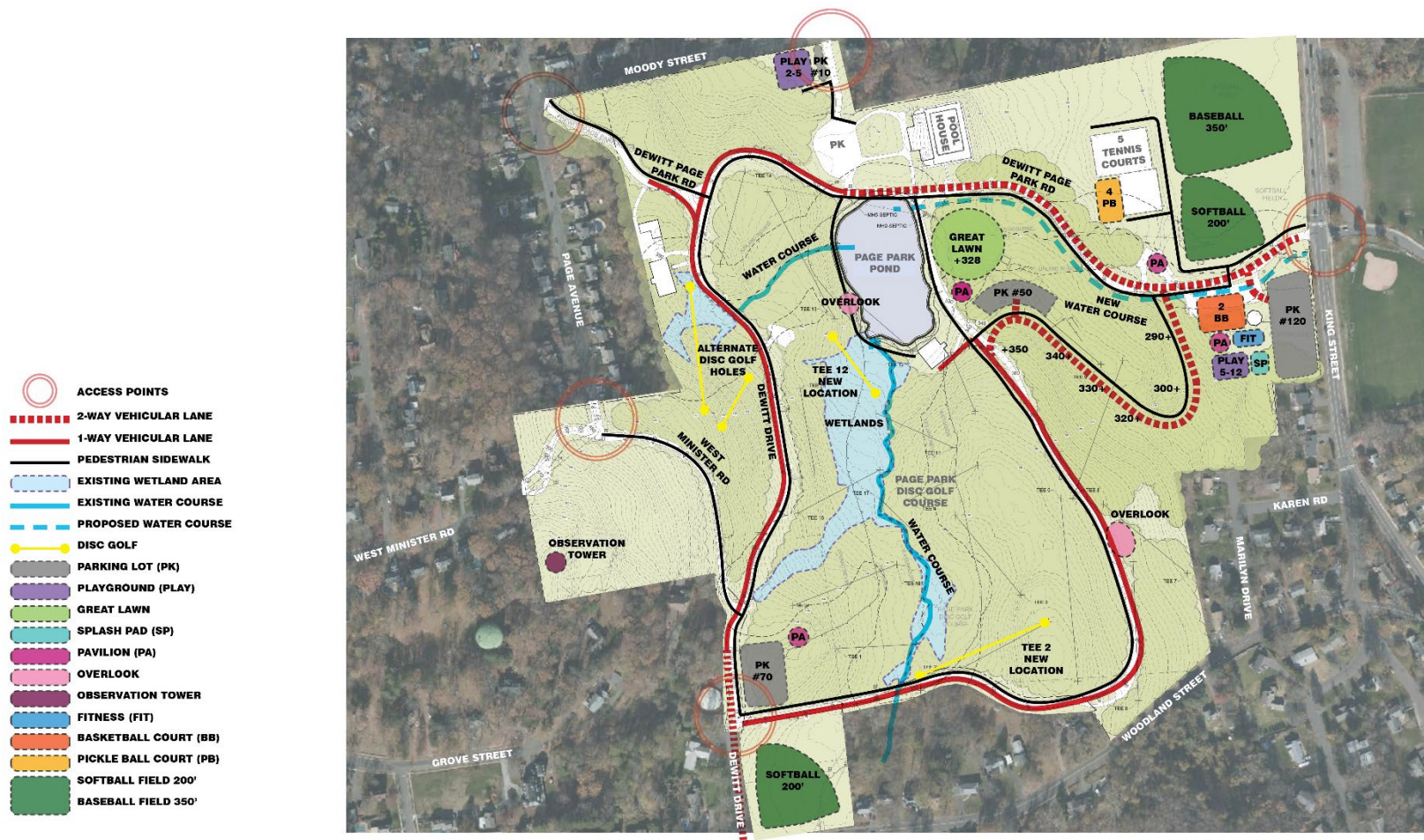


# PAGE PARK Existing Conditions

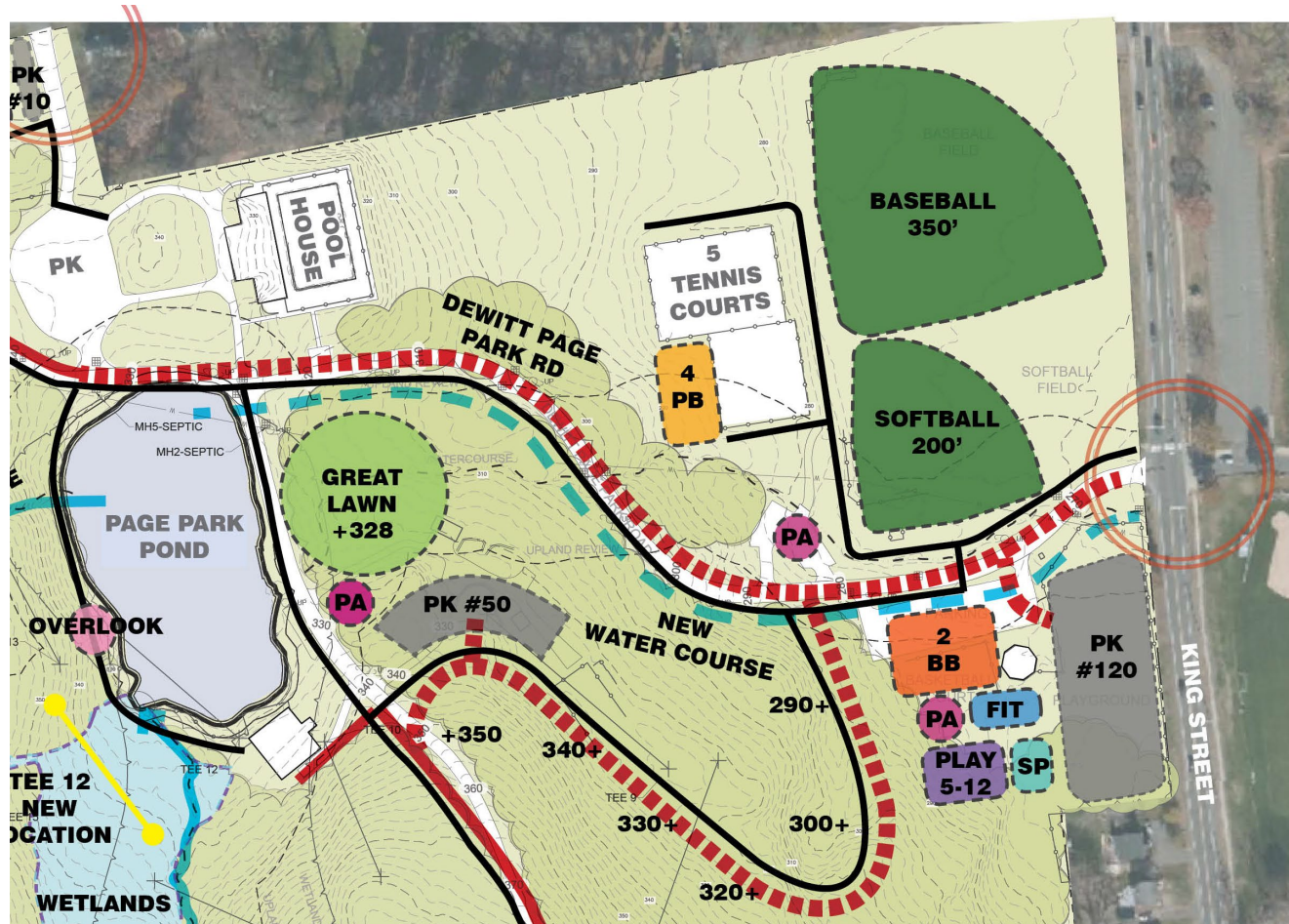




# PAGE PARK Preliminary Design Review Concept A

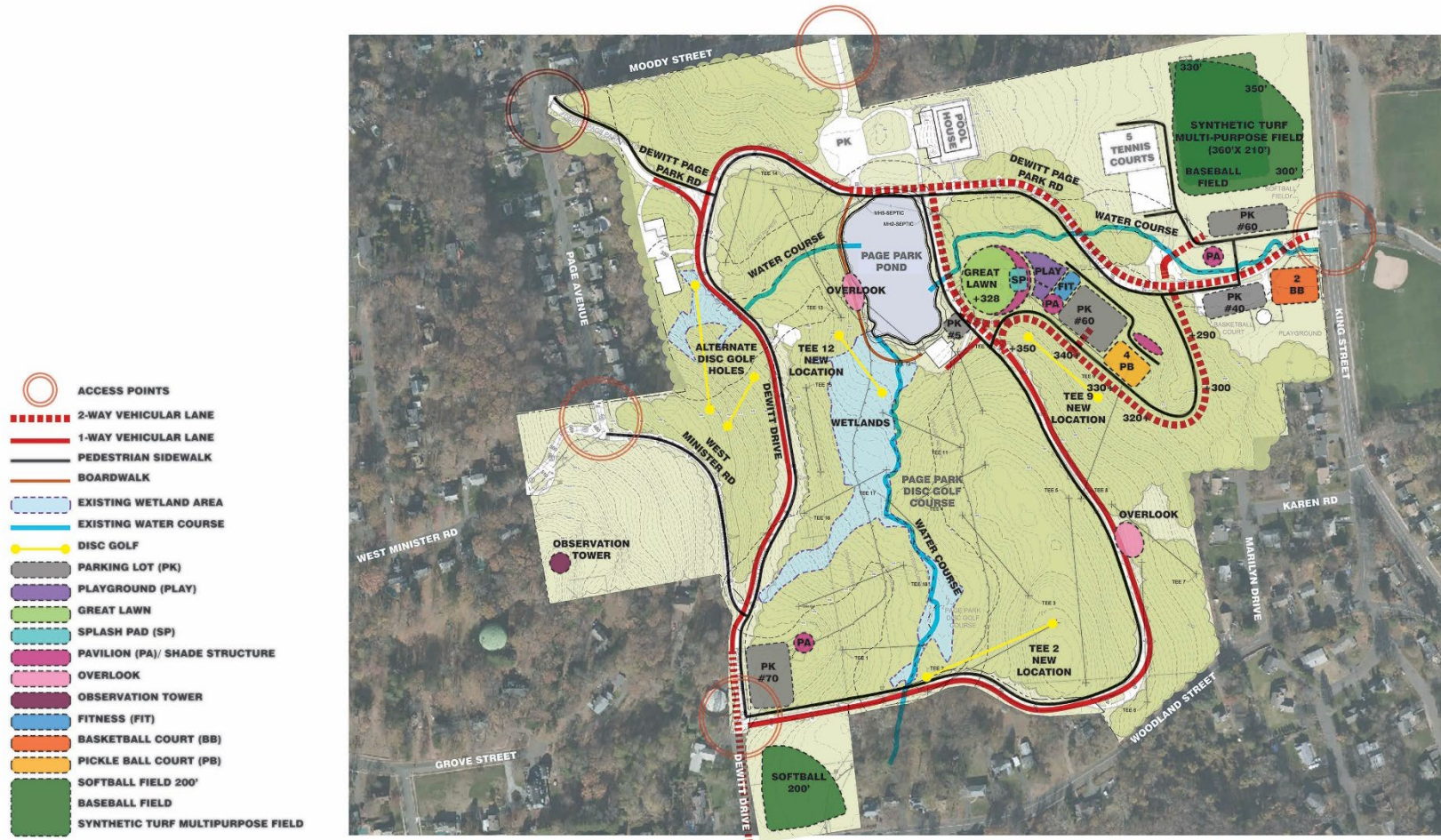


# PAGE PARK Preliminary Design Review Concept A



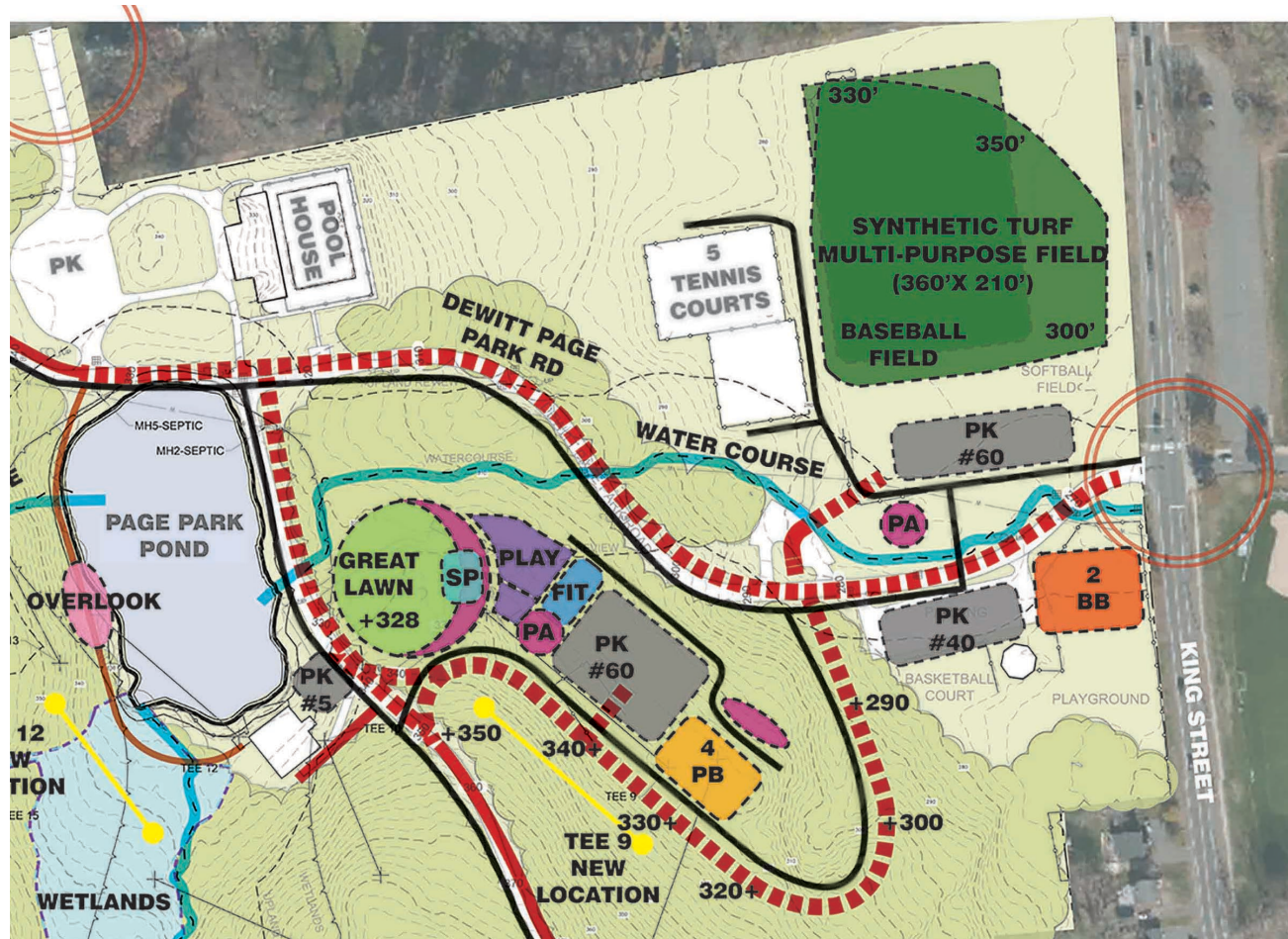


# PAGE PARK Preliminary Design Review Concept B



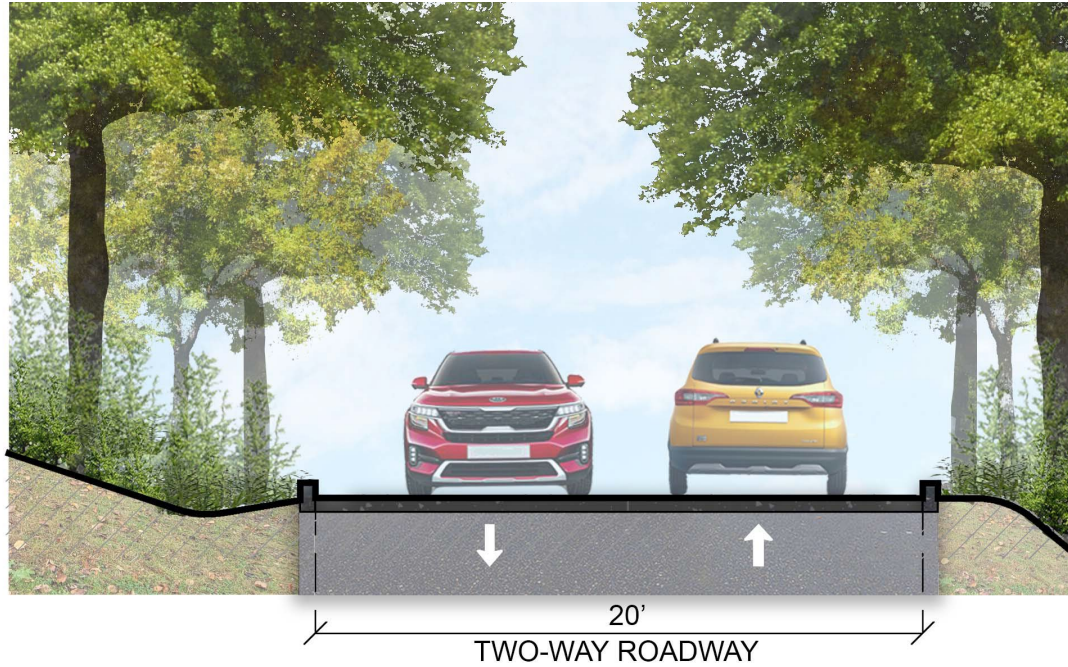


# PAGE PARK Preliminary Design Review Concept B





# PAGE PARK Preliminary Design Review Roadway

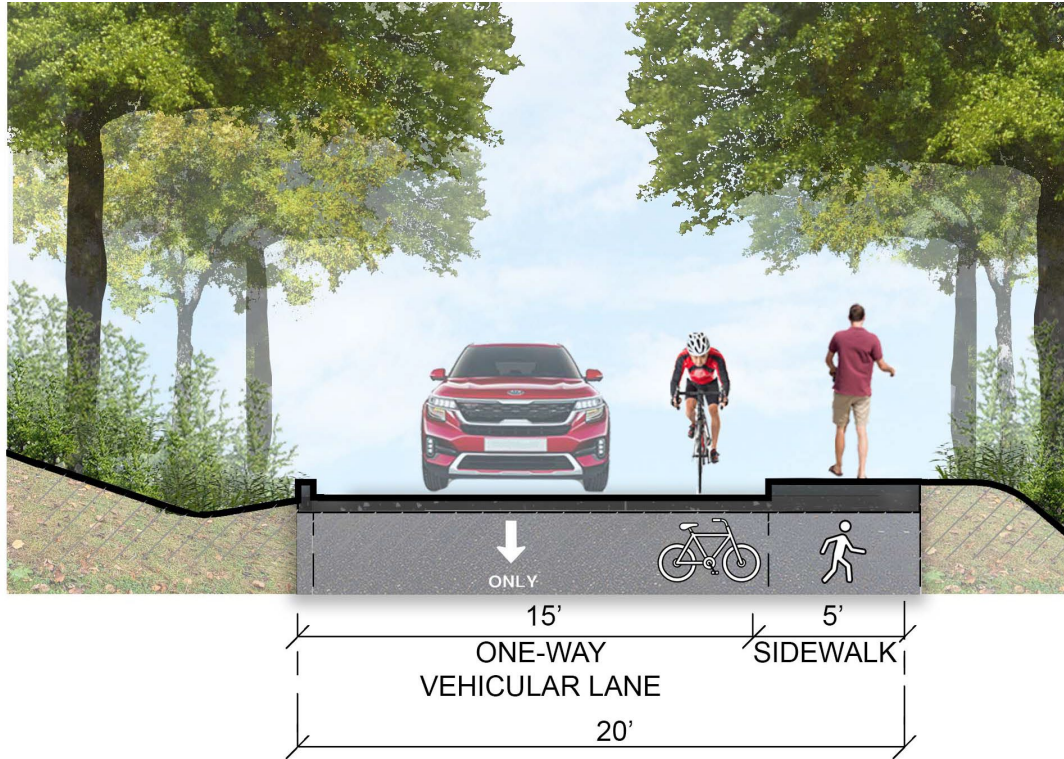


A

EXISTING CONDITION



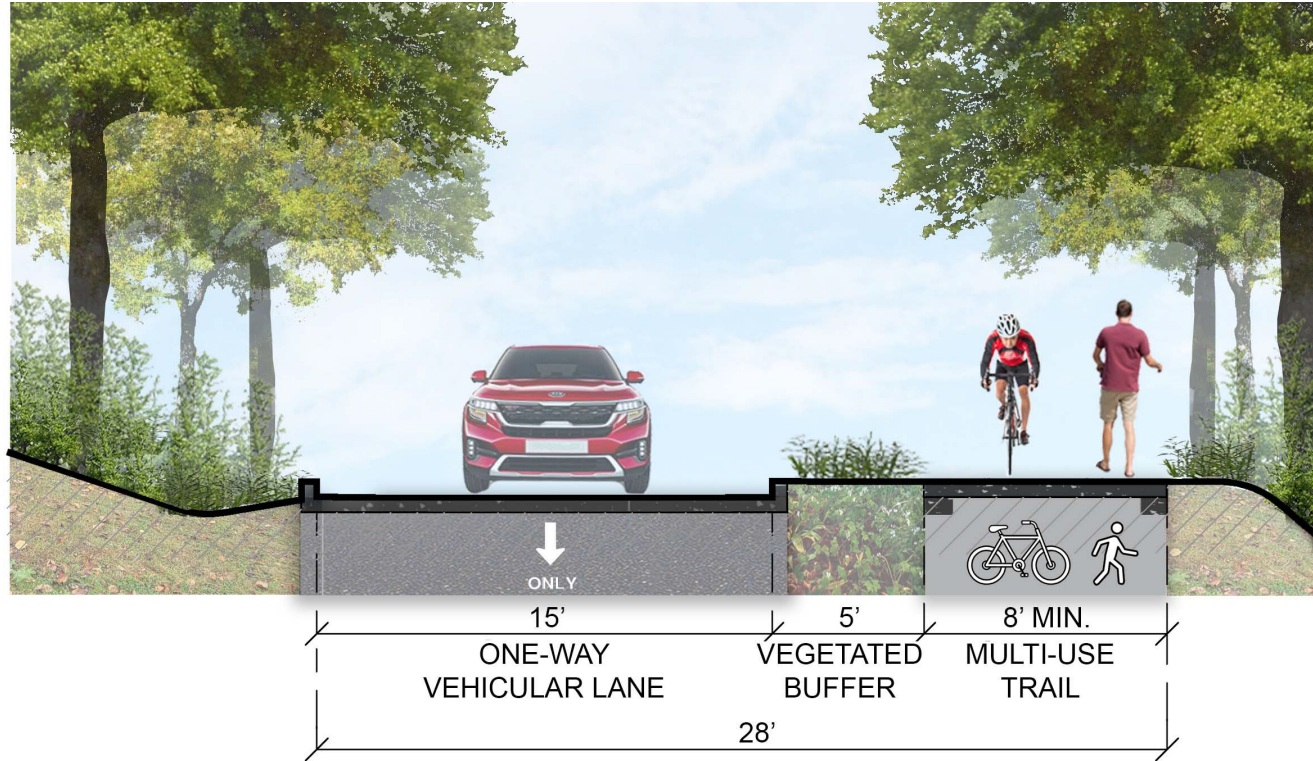
# PAGE PARK Preliminary Design Review Roadway



**B** ONE-WAY ROADWAY WITH SIDEWALK



# PAGE PARK Preliminary Design Review Roadway

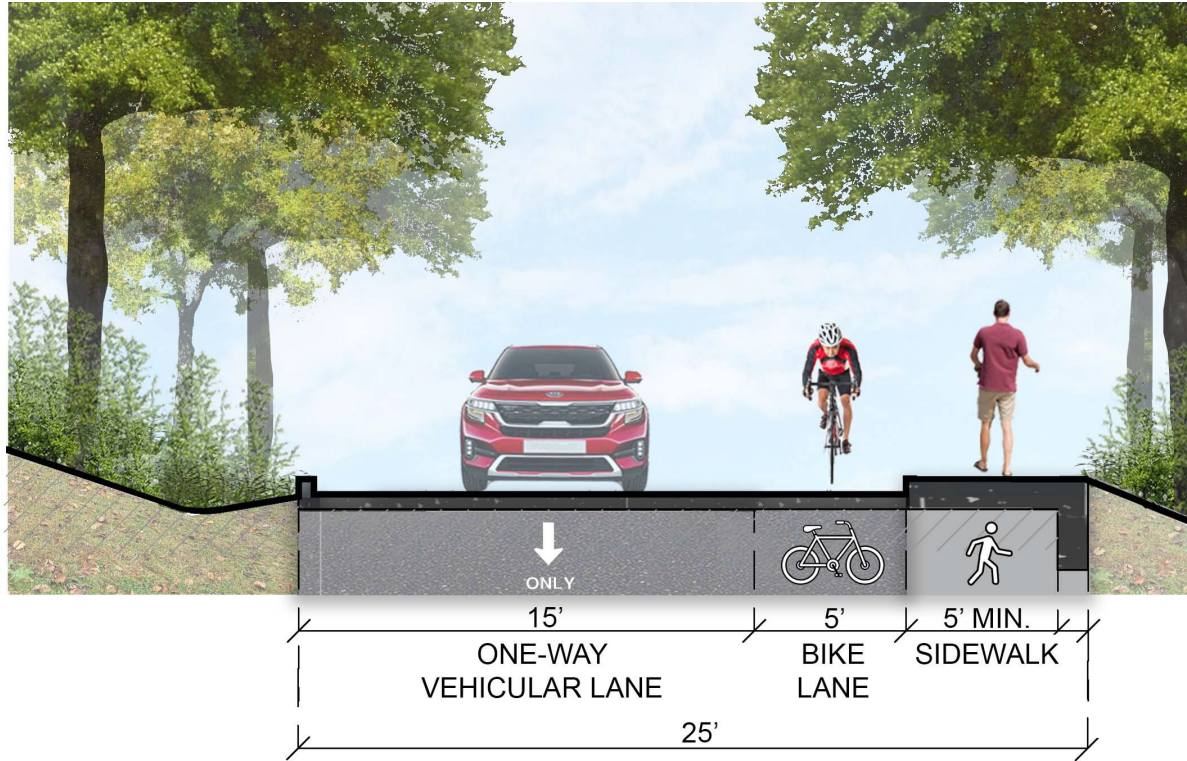


C

ONE-WAY ROADWAY WITH SHARED MULTI-USE TRAIL



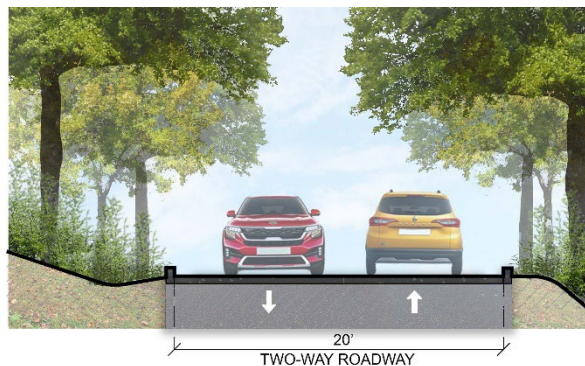
# PAGE PARK Preliminary Design Review Roadway



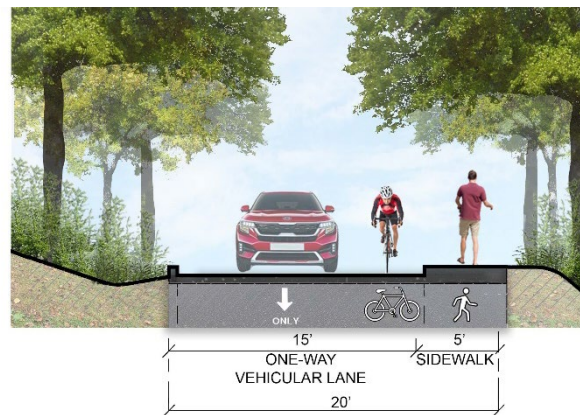
D

ONE-WAY ROADWAY WITH BIKE LANE AND SIDEWALK

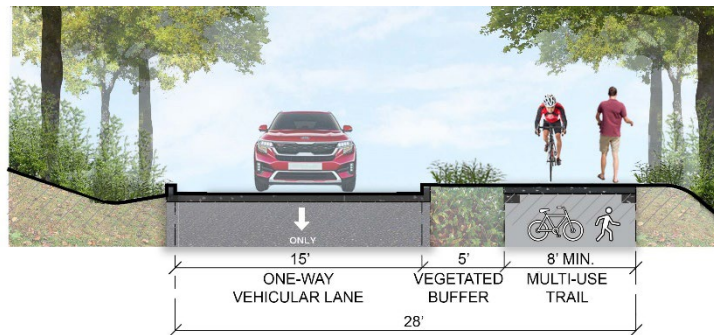
# PAGE PARK Preliminary Design Review Roadway



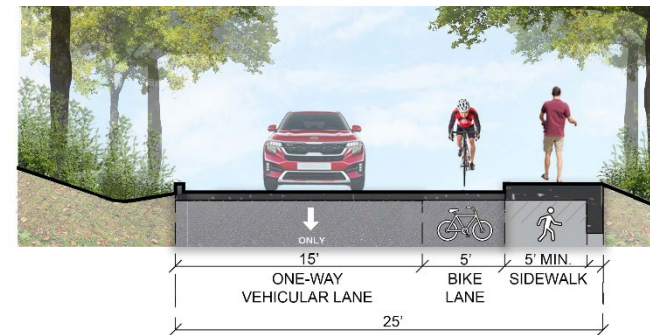
A EXISTING CONDITION



B ONE-WAY ROADWAY WITH SIDEWALK



C ONE-WAY ROADWAY WITH SHARED MULTI-USE TRAIL



D ONE-WAY ROADWAY WITH BIKE LANE AND SIDEWALK



# PAGE PARK Preliminary Design Review Parking

- Master Plan: 314 Spaces
  - Additional 45 pool parking spaces not needed: 269 Spaces
- Rockwell Park: 291 Spaces
- Assessment: 250-300 Spaces
  - Concept A: 294 Spaces
  - Concept B: 289 Spaces
- Reduce Parking and Utilize Overflow

# PAGE PARK Preliminary Design Review Budget

- Master Plan: \$13.5 million
- Savings +/- \$1 million
  - Reduce Synthetic Turf size
  - Consolidate Parking
  - Reduce Number of Pavilions
- Possible Savings +/- \$2.5 million
  - Eliminate Synthetic Turf Field
    - Need for Diamonds not Rectangles
  - Reduce Parking and Utilize Overflow
  - Reduce Lighting
- Optional Program: +/- \$4.5 million
  - Basketball: 1.5 to 2 Courts
  - Play Area
  - Splash Pad
  - Great Lawn
  - Vehicular Drive
  - Boardwalk
  - Observation Tower
  - King Street Entrance



# PAGE PARK Basic Project Timeline

Task	Approximate Timeframe*
Contract Negotiation	Nov 2021
1   Data Collection and Site Investigation	Dec 2021 - Jan 2022
2   Preliminary Design	Jan 2022 – Feb 2022
3   Schematic Design (25%)	Feb 2021 – Apr 2022 (P)
4   Design Development (60%-75%)	Apr 2022 - Sep 2022
5   Permitting & Site Plan Review	Oct 2022 – Jan 2023
PHASE I ONLY	
6   Final Design/ Contract Documents (100%)	Jan 2023 - Mar 2023 (P)
7   Bid Assistance	Apr 2023
8   Construction-Phase Services (Phase I Only)	May 2023 – Nov 2023
FUTURE PHASES	
Final Design/ CD's/Bidding/Construction Phases	TBD Based on available funding



# Discussion

A wide-angle photograph of a park. In the foreground, there is a large, open grassy area. In the middle ground, there is a baseball field on the left and a tennis court on the right. The background is filled with trees, some of which have yellow and orange autumn foliage. The sky is overcast and grey.